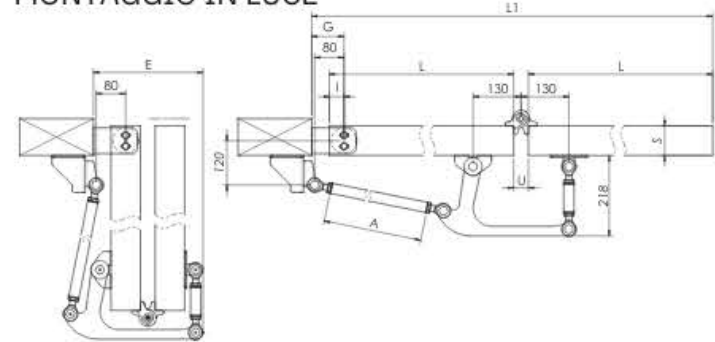




# QUICK FOLDING

- I** Sistema anta battente con apertura a libro
- UK** Swing gate system with folding movement
- D** Drehfaltorsystem
- F** Système de porte battante avec ouverture à accordéon
- E** Sistema para puertas cancela con movimiento a librillo
- RU** Складчатая дверь с распашной системой

## MONTAGGIO IN LUCE

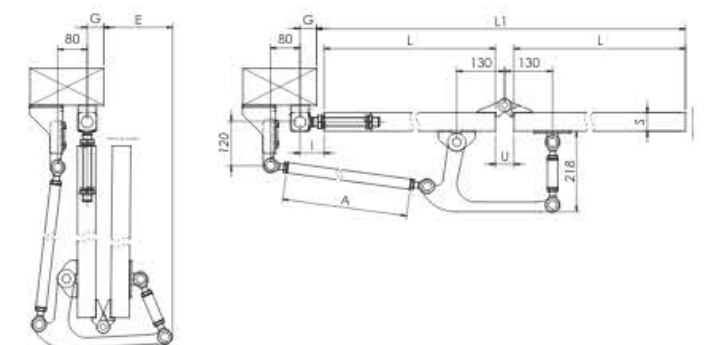


Esempio/Example: PG71S+PG70I+139..., S=80mm

- L1: larghezza apertura/Opening Width
- G: posizione asse rotazione/Pivot position
- I: sormonto-distanza asse rotazione-anta/Pivot-Leaf Distance
- L: larghezza anta/Leaf Width
- A: lunghezza asta/Truss Length
- E: ingombro impacchettamento in luce/Opening encumbrance
- S: larghezza tubo: consigliato 50÷80/Tube Width
- U: distanza ante/Inter-Leaves Distance: 139...=40; CRN1...= 50

Cardini Pilastro Post Hinges		G	I	L	A	E	Peso Max 1 Anta Max Weight 1 Leaf		(L1/H=2) 139...
Sopra/Top	Sotto/Bottom	mm					CRN1A	CRN1	
PG51S	PG50I	54	S/2						25
PG51S100	PG50I	72,5	S/2	$\frac{L_1 - G}{2} + \frac{I - U - G}{2} - 210$				0	
PG71S	PG70I	87,5	S/2					25	
CR50	PG50IRQ	95÷150	45					0	
CR60	PG70IRQ	100÷155	50			$250 + \frac{S}{2}$	150	200	
CR50	CR50	95÷150	50÷105	$\frac{L_1 - G}{2} + \frac{I - U - G}{2} - 210$				50	
CR60	CR60	100÷155	55÷105					0	
CL60	CL60	100÷155	55÷105					0	

## MONTAGGIO OLTRE LUCE



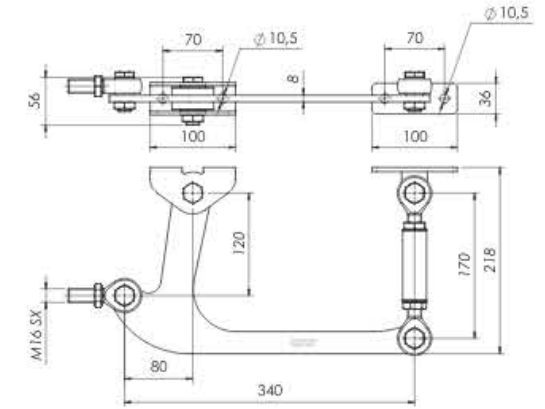
Esempio/Example: CG50LS+CG50LI+CRN1A, S=50mm

- L1: larghezza apertura/Opening Width
- G: posizione asse rotazione/Pivot position
- I: sormonto-distanza asse rotazione-anta/Pivot-Leaf Distance
- L: larghezza anta/Leaf Width
- A: lunghezza asta/Truss Length
- E: ingombro impacchettamento in luce/Opening encumbrance
- S: larghezza tubo: consigliato 50÷80/Tube Width
- U: distanza ante/Inter-Leaves Distance: 139...=40; CRN1...= 50

Cardini Pilastro Post Hinges		I	L	A	E	Peso Max 1 Anta Max Weight 1 Leaf		(L1/H=2) 139...	
Sopra/Top	Sotto/Bottom	mm					CRN1A		CRN1
CR50	PG50IRQ	45						25	
CR60	PG70IRQ	50						0	
CG50LS	CG50LI	50÷105				$\frac{L_1 + G}{2} + \frac{I - U - G}{2} + 250 - \frac{S}{2}$	150	200	
CR50	CR50	50÷105						0	
CR60	CR60	55÷105						40	
CL60	CL60	55÷105						0	

## Meccanismo a boomerang per sistema QuickFolding

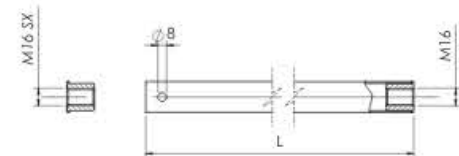
- UK** Boomerang mechanism for QuickFolding system
- D** Boomerang-Mechanismus für das QuickFolding-System
- F** Mécanisme Boomerang pour système QuickFolding
- E** Mecanismo Boomerang para el sistema QuickFolding
- RU** Механизм типа «бумеранг» с системой QuickFolding



Articolo - Article		N°	⊗
Riferimento - Reference	QUICK F1	CT 12 80 QF	2 6,4

## Asta lunga per sistema QuickFolding

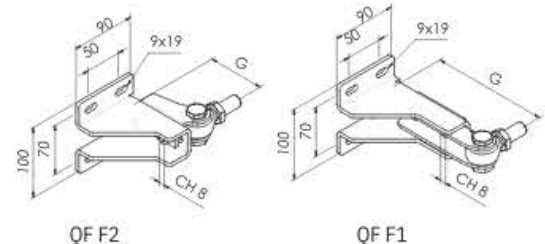
- UK** Long rod for QuickFolding system
- D** Lange Stange für QuickFolding-System
- F** Tige longue pour système QuickFolding
- E** Varilla larga para sistema QuickFolding
- RU** Длинный шток для системы QuickFolding



Articolo - Article		L	N°	⊗
Riferimento - Reference	PF 233 FO	1300	2	2
	PF 230 FO	2000	2	8
				4,
				2

## Fissaggio regolabile in luce e oltre luce per sistema QuickFolding

- UK** Adjustable fixation lateral to the post or on the back of the post
- D** Befestigung seitlich am Pfosten oder hinten am Pfosten
- F** Fixation réglable latéralement au pilier ou derrière le pilier
- E** Fijación ajustable al lado del pilar o detrás del pilar
- RU** Регулируемое крепление в про свете и за про светом для системы QuickFolding



Articolo - Article		Fissaggio Fixing		N°	⊗
Riferimento - Reference	QF F1	FT 01 16 QF	Oltre luce / Back	2	2
	QF F2	FT 02 16 QF	In luce / Lateral	2	8
					3,
					4